

Documentation for Card Template

PHOTOGRAPHY**PLA.NET**

Thank you for purchasing this card template from PhotographyPla.net! In this documentation we'll cover the process of editing the card template to suit your needs.

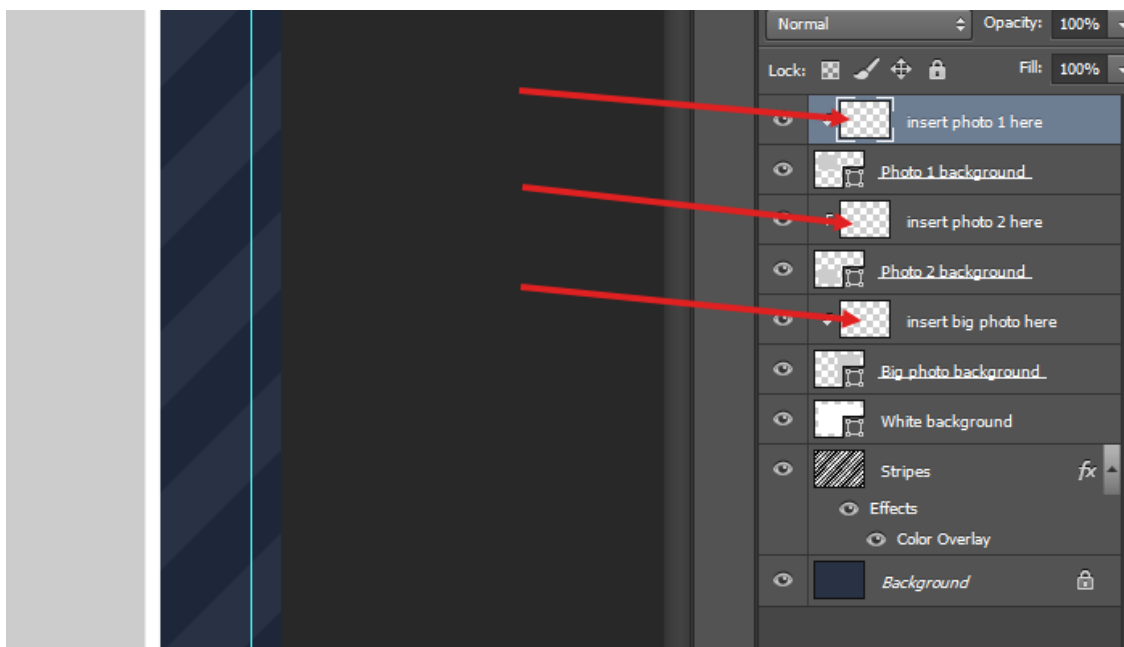
The screenshots in this documentation may not be from the exact card that you purchased, but the basic editing process is the same.

Here are some details about our graduation announcement card templates:

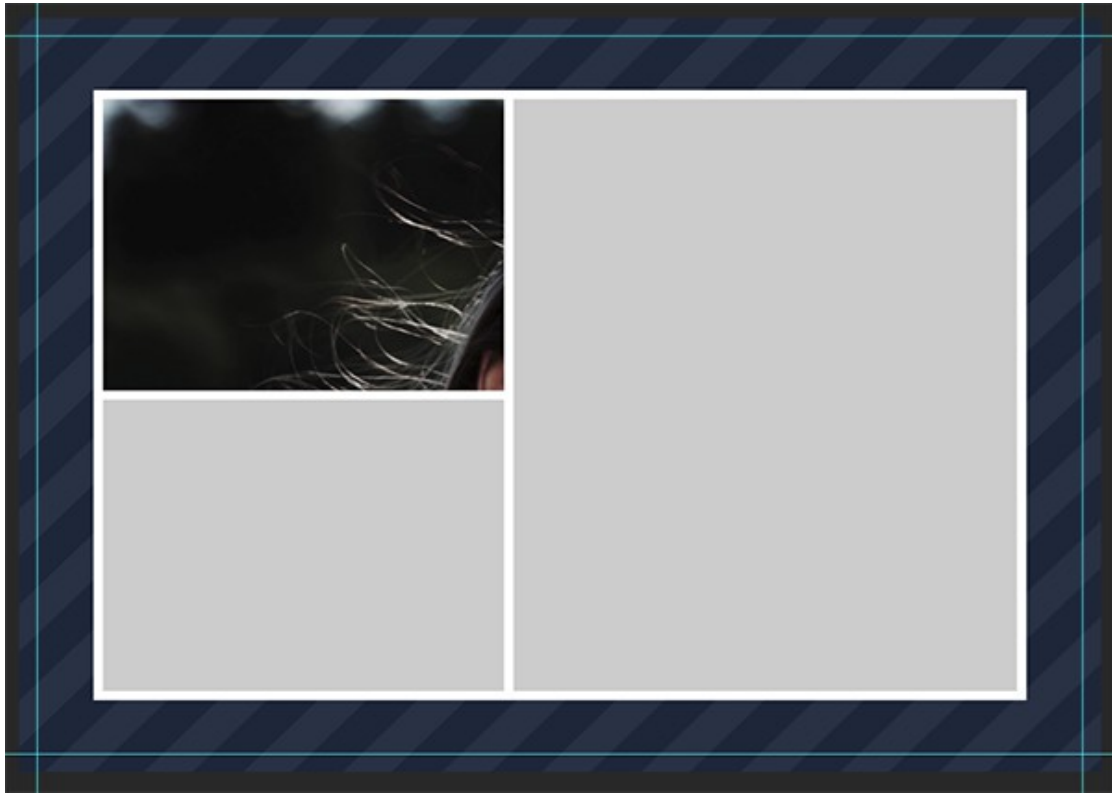
- Some of the templates include both a front and back design, while others are intended for a single-sided card. The details of each template is listed on the product page on our site.
- The templates are for card sizes of 5 inches by 7 inches, with a bleed area included. The templates are created with the specs for printing at Bay Photo Lab, but you can use your printer or lab of choice. Regardless of where you choose to print your cards, be sure that you check their requirements and specifications before submitting them for printing. *PhotographyPla.net cannot accept any responsibility related to the printed products created through the use of our templates.*
- Fonts are not included in the download files due to licensing and copyright restrictions, but each template download includes a fonts.txt file that lists the fonts and provides URLs of where you can download the fonts.
- Photos are added using clipping masks. This documentation will cover the process.

How to Add Your Photos

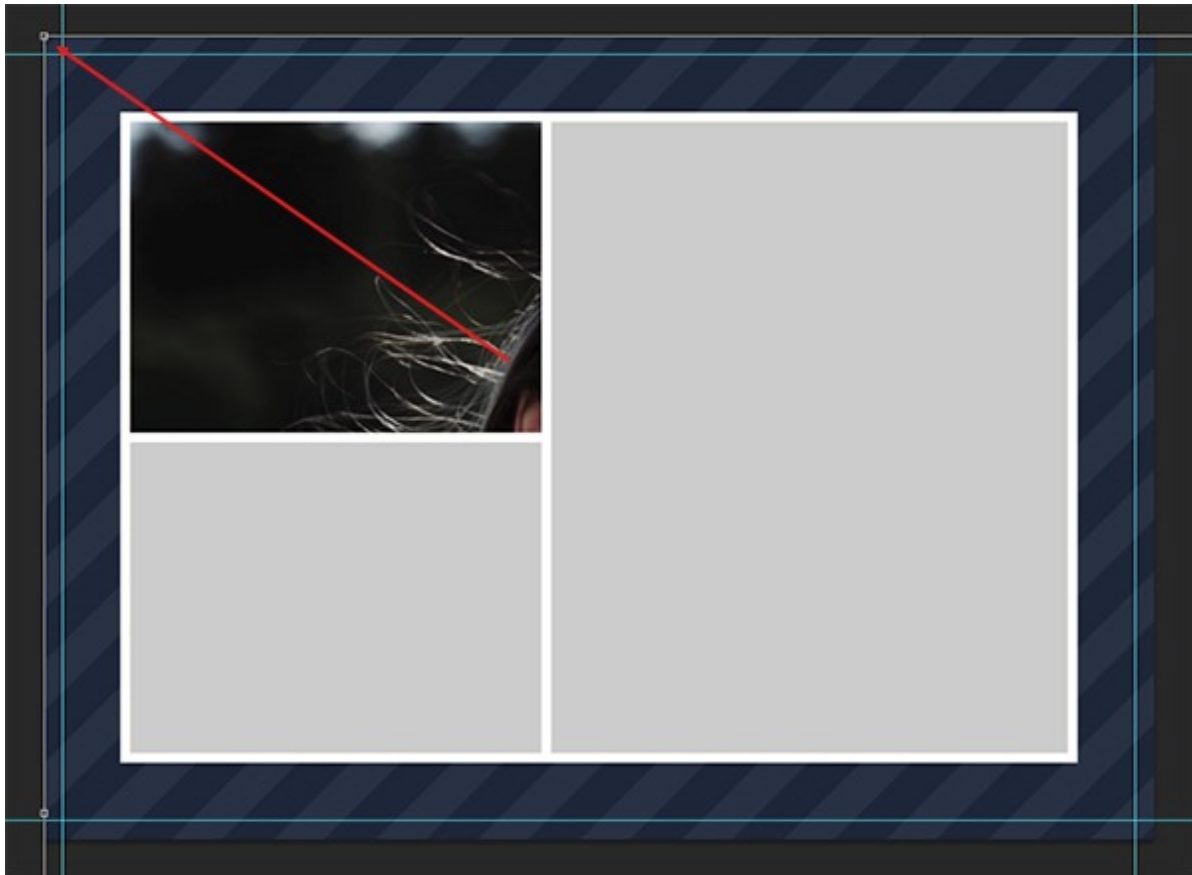
Each card templates uses clipping masks to make it easy for you to insert your own photos in Photoshop or Photoshop Elements. When you open the template and look in the layers palette you'll see a layer named "insert photo here" for each photo that you will need to enter.



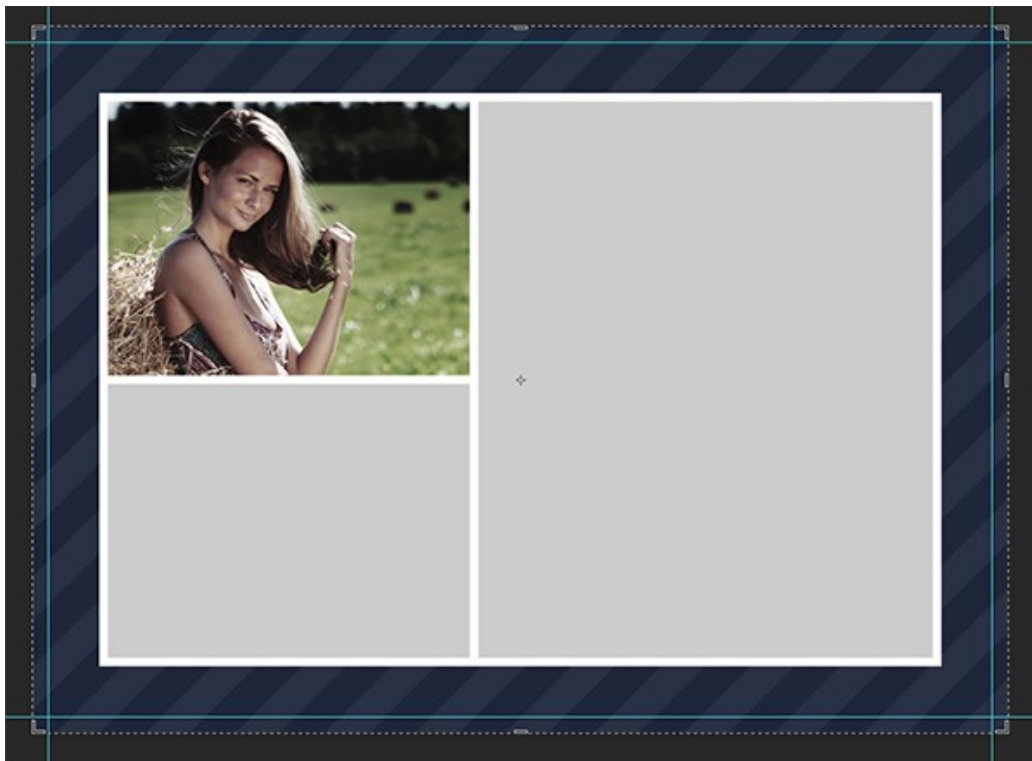
So you'll want to open the photos that you want to use, copy one of them to your clipboard, select the "insert photo here" layer in the layers palette, and paste the photo. It will then be inserted in the right place.



It inserts your photo using the clipping mask, but you'll need to adjust the size of the photo to fit the block. To do this, with the photo layer still active, go to Edit > Free Transform. Now, to adjust the size of the photo, hold down the shift key and click one of the corners of the photo and drag it in to reduce the size. By holding the shift key it will keep the proper proportions.



Once you get the size the way you want it, you can drag the photo to move it around and get it placed properly. Then click enter when you are done.



Repeat this process for as many photos as needed for the template.

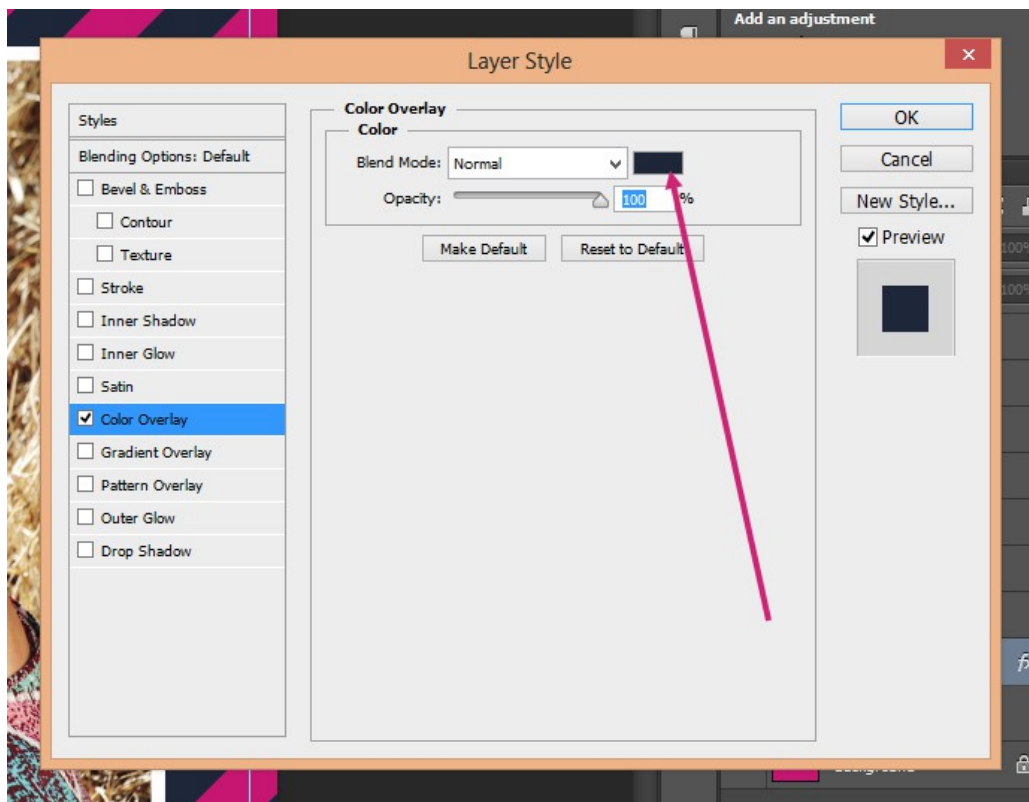


Editing Colors

The colors are easy to change with some basic knowledge of Photoshop. Most templates include a background layer with some color. To change that color, simply set the color that you want as the foreground color and use the paint bucket tool to fill the background.



Many of the templates will also include some element like stripes, a chevron pattern, or diamonds. To change this color, find the appropriate layer and edit the color overlay. Double click on the layer to open the layer options.



And that will update the card template.



Editing Text

The first thing you should do is open the fonts.txt file and download the fonts used in the card template. You can use these fonts or change them if you'd like, but the cards have been designed for the specific fonts so you may need to change things like the font size when you use a different font.

All you need to do to change the text is select the type tool, then click on the text that you want to edit. Delete the filler text and type in your own text.

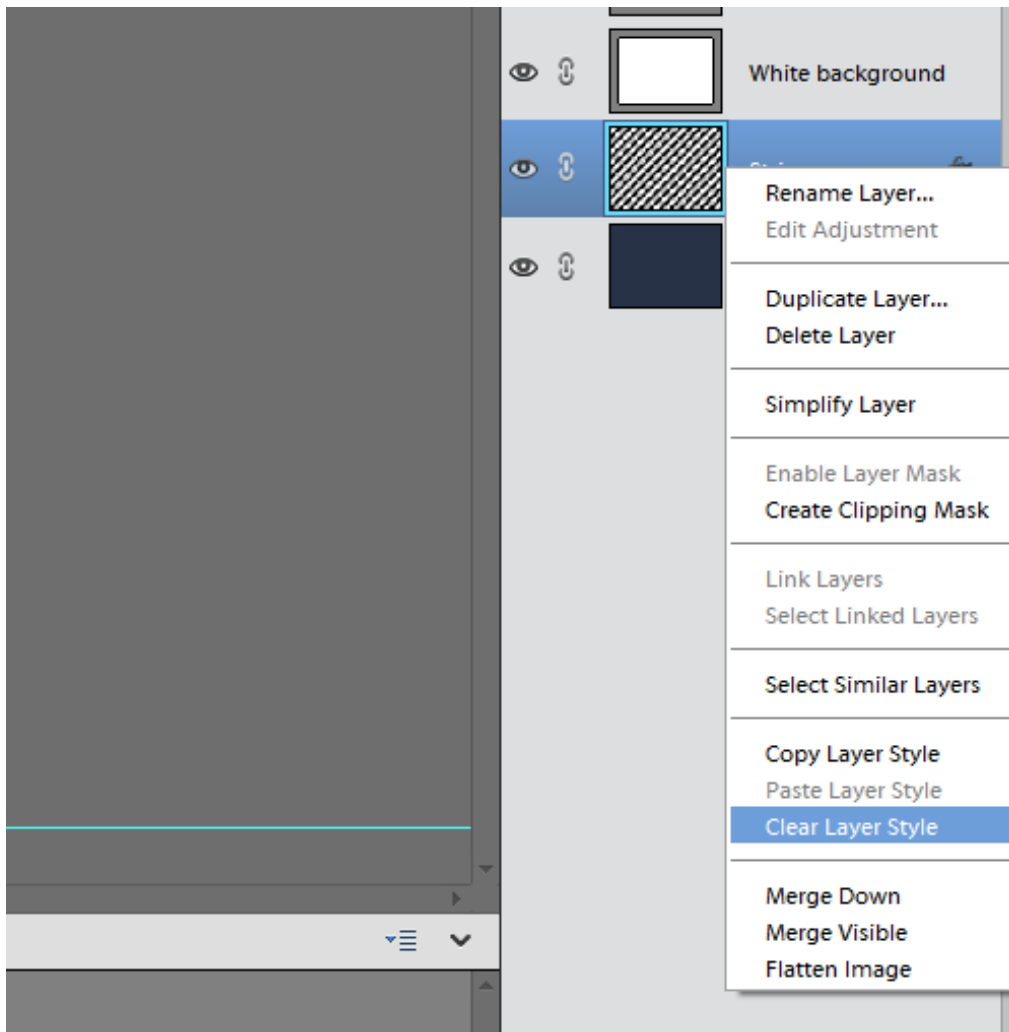


You can change the font, color, size, spacing, using the type tool.

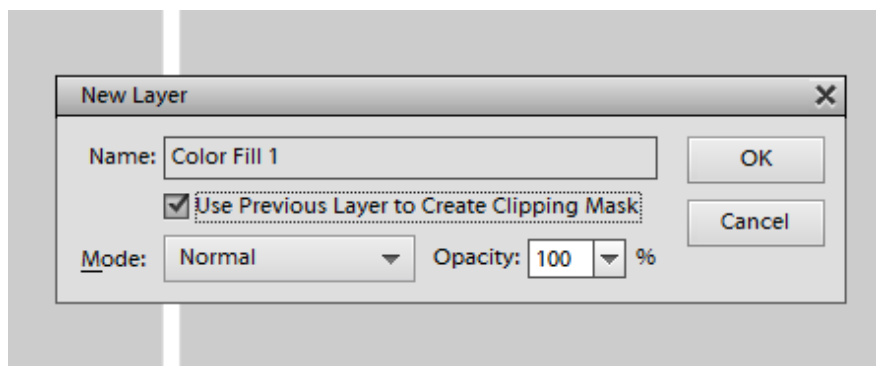
Editing Color Overlays in Photoshop Elements

The process of changing colors may be a little different in Photoshop Elements. PSE does not support color overlays, so there are a few extra steps required to make these changes. In this example we'll change the color of the stripes.

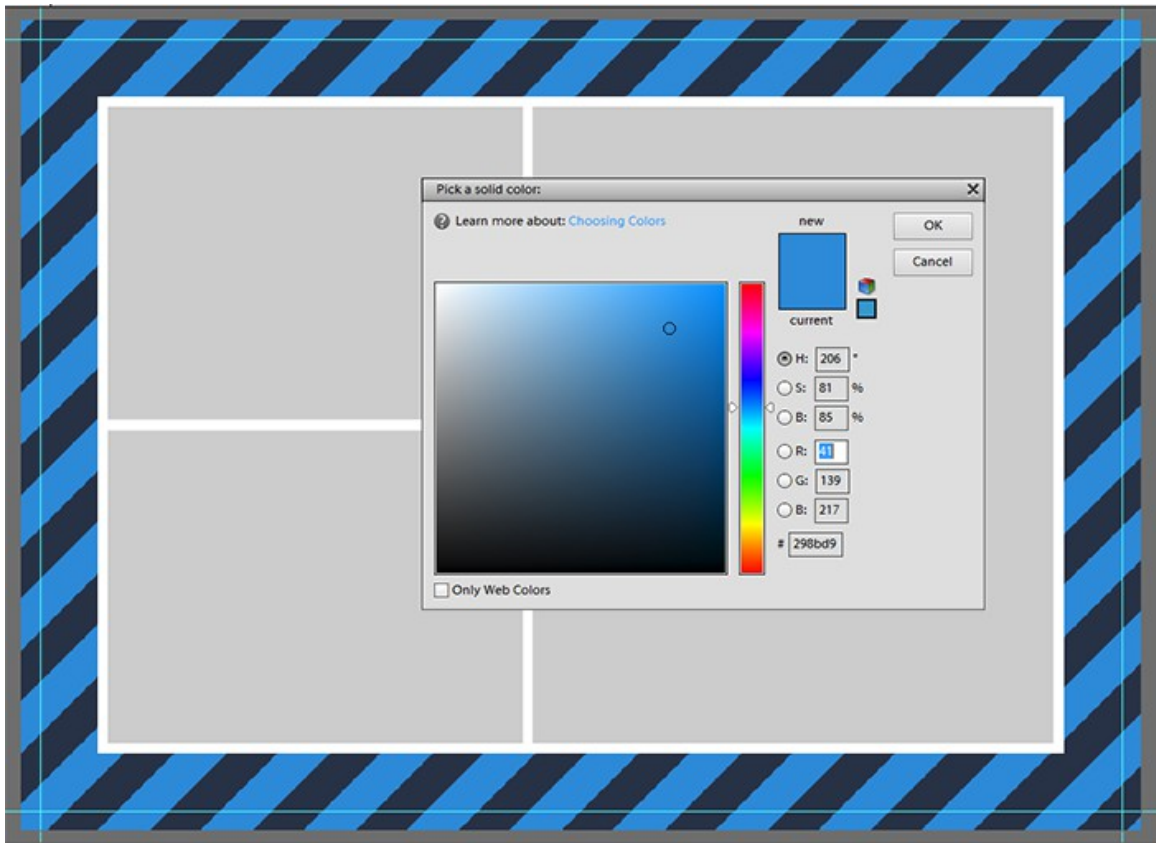
First, find the stripes layer in the layers palette. Notice the “fx” icon, which indicates that some layer styles are applied. Right click on that layer in the layers palette and click “clear layer styles”.



Next, with the stripes layer still selected in the layers palette, go to Layer > New Fill Layer > Solid Color. This will open a window like the one shown below. Be sure to check the box for “Use previous layer to create clipping mask.”



Click “ok”. Now it will open up the color selector and you will be able to choose the color that you want to use for the stripes.



When you have the color that you want, click “ok” and it will apply the color.